



What I should already know:

Humans are animals
 Humans are mammals
 Mammal babies grow in their mothers and grow up to be adults
 Young humans are called babies
 Many animals, including all mammals, have bones
 The names of the main external parts of the human body (including male and female external parts) - recapped as necessary

Key skills used/ practised:

Labelling diagrams/ drawings
 Using scientific terms accurately
 Explaining the jobs of different parts of the skeleton
 Sorting animals based on their characteristics (e.g. vertebrate, invertebrate)
 Solving clues to identify animals

By the end of this unit I will know these main facts:

The bones of an animal are called its skeleton
 The names, roles and locations of the main skeletal bones
 Muscles are joined to bones by ligaments and tendons
 That muscles contract to move the skeleton
 Animals without spines (vertebrae) are called invertebrates
 Some invertebrates have exoskeletons or hydrostatic skeletons

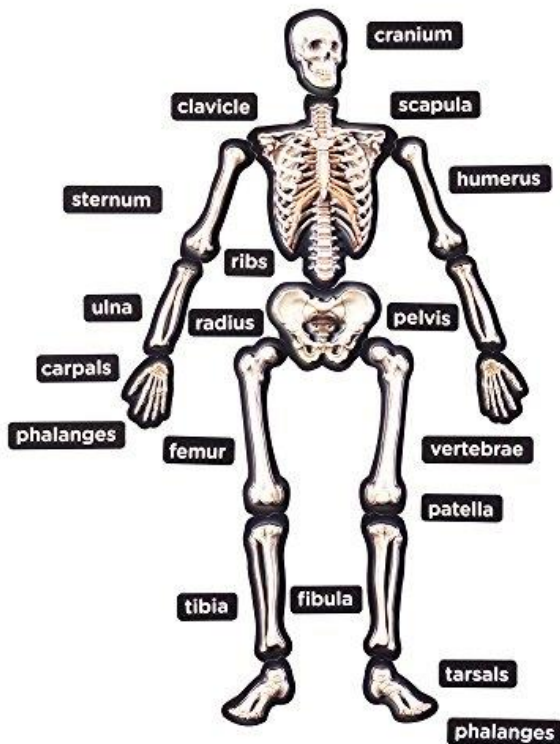
I will be able to explain the main jobs of the skeleton:

Supporting the body's structure
 Protection of internal organs
 Allowing movement

Key Vocabulary:

Skeleton	skeletal
Invertebrate	vertebrate
hydrostatic skeleton	
bone	muscle
tendon	ligament
tissue	femur
clavicle	radius
ulna	pelvis
spine	vertebrae
cranium	ribcage
tibia	fibula
External	internal

Diagrams:



Quiz

	<u>Start of unit</u>	<u>End of unit</u>		<u>Start of unit</u>	<u>End of unit</u>
1. What is the name for all the bones in an animal's body?			7. Tick all the jobs of the skeleton		
a) The scarecrow			Allowing movement		
b) The skeleton			Making food for the animal		
c) The skin			Protecting internal organs		
d) The skittle			Supporting the body's structure		
2. The head bones are known as			Heating the body		
a) The squash			8. Tick all the words below that are real bones found in the human body		
b) The hull			tibia		
c) The skull			fibula		
d) The hall			vertebrae		
3. The thigh bone is called			ulna		
a) The feral			pelvis		
b) The folder			9. What could this animal be? Clue: I have a skeleton and I breathe air. Tick ONE		
c) The farmer			A fish		
d) The femur			A mammal		
4. Muscles are joined to bones by			An earthworm		
a) Ligaments and tendons			10. Tick one word to complete this sentence: Muscles _____ to move some body parts		
b) Lights and timers			a) convert		
c) Lions and tigers			b) commit		
d) Lamps and trimmers			c) contract		
5. Jellyfish have hydrostatic skeletons			d) conflict		
True					
False			Total score out of 10:		
6. All animals have skeletons					
True					
False					