



## Topic: Locality of the School and Changes

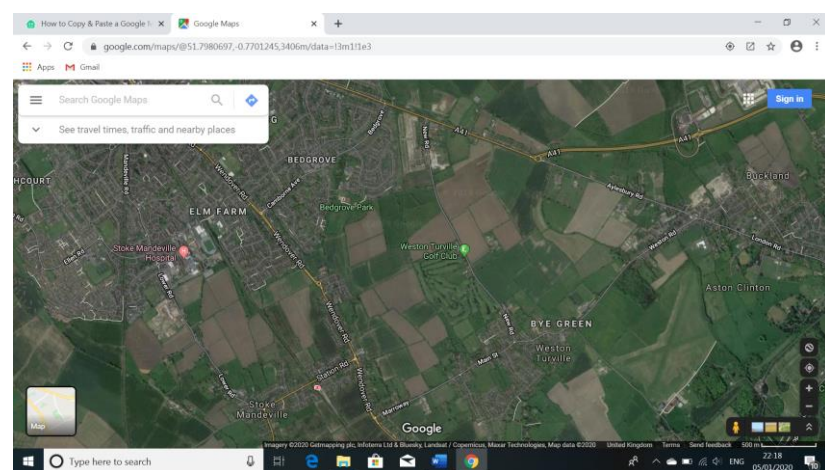
Year: 4 Spring 1

## Strand: Locational Knowledge/ Human and Physical

### What Should I Already Know?

The village I live in is called Weston Turville, which is in Buckinghamshire. There are villages and towns in Buckinghamshire, none of which are coastal. Buckinghamshire is in England, which is a country. England, which is in the United Kingdom, is in the continent of Europe. The capital cities of the four countries that make up the United Kingdom and their characteristics. The surrounding seas of the United Kingdom. Land-use patterns in the local area and how they have changed over time. The terms urban and rural and use them to describe areas of the UK. How to locate places using four figure grid references. How to identify features such as hills, mountains, coasts and rivers on a map.

### Diagrams



Imagery 2020 Getmapping plc, Infoterra Ltd & Bluesky

### Main Information

Using Google Maps zoom in to the whole UK and ask which country of the UK they are in, then on a progressively larger scale ask them to locate county, town, village etc. Can they find their school on the map? Put the school's postcode into the search box and zoom in until they can identify exactly where the school is. Once they have done this they then use the map to answer a number of questions about their area – can they find their route to school? What other landmarks can they identify on the map, e.g. railway lines, parks, rivers etc. Find satellite images of their locations. Pupils are asked to create a map of their local area in Google Maps, Google Search and Google Images. They should use a blank word processing document, a presentation or Google My Maps to present their findings. They should be able to find some important landmarks on the maps along with geographical features. They could also find information on these in Google Search and Google Images to compile a media-rich report on your local area. In this lesson, children look at the various impacts of travel both positive and negative. Children begin using complex discussion and reasoning tools, such as the Diamond 9 approach, to help sort their ideas as a group. Online tools will aid them in understanding various impacts. Using a range of online reference sources, students investigate a number of sustainable transport solutions that have been implemented in the West Midlands and how they affect Buckinghamshire. Students will identify the transport 'problems' the projects were designed to address and the solutions achieved.

### Vocabulary

congestion	something that is blocked or clogged
CO2	a heavy colourless gas that is formed by burning fuels, and breathing out
encourage	to make more determined, hopeful, or confident
enforce	to make sure that people follow the laws and rules
environmentalist	someone who works to protect the environment
grid-lock	a situation in which streets are so full that vehicles cannot move
human feature	things that are built by humans such as bridges and roads
impact	a strong, and often bad effect
journey	the act of traveling from one place to another
landmark	an object or a feature of a landscape or town that has importance or makes a place easily recognisable
location	A certain place or point
physical feature	natural objects such as mountains and rivers
primary	earliest thing in time or order
route	the way of getting from a starting point to a destination
secondary	the second thing in time or order
sustainable	using natural resources in a way that we could keep doing for a long time
tertiary	the third thing in time or order

# Weston Turville CE School – Geography Assessment



Topic: Locality of the School and Changes

Year: 4 Spring 1

Strand: Locational Knowledge/ Human And Physical

Question 1: Which country in the UK do we live in?	Start of unit:	End of unit:
Northern Ireland		
Scotland		
England		
Wales		

Question 2: What is the nearest town or village to Weston Turville?	Start of unit:	End of unit:
Aylesbury		
Halton		
Stoke Mandeville		
Bierton		

Question 3: Which of these features will you <b>not</b> find in Weston Turville?	Start of unit:	End of unit:
reservoir		
river		
road		
forest		

Question 4: Which route would you use to get from our school to St. Mary's church?	Start of unit:	End of unit:
Marroway, Worlds End Lane, William Burt Close		
Marroway, New Road, Walton Place		
Marroway, Bates Lane, Church Lane		
Bates Lane, Brookside, Church Walk		

Question 5: Which of these is a sustainable transport?	Start of unit:	End of unit:
Diesel Car		
Plane		
Bus		
Petrol Motorbike		

Question 6: What is the name of the controversial transport development happening in Buckinghamshire?	Start of unit:	End of unit:
A new ferry port		
An extension to Luton Airport		
A new bus station		
HS2		