



Topic: Compass Points and Grid References

Year: 4 Spring 2

Strand: Locational Knowledge/ Human and Physical

**What Should I Already Know?**

Land-use patterns in the local area and how they have changed over time. The terms urban and rural and use them to describe areas of the UK.  
 How to locate places using four figure grid references.  
 How to use the 4-point compass directions.  
 How to identify features such as hills, mountains, coasts and rivers on a map.

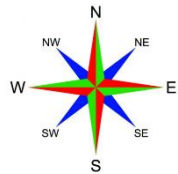
**Main Information**

- 4 and 6 figure grid references:  
 The 4 main points of a compass are; North, South, East, West.  
 To get the 8 point compass; always use the North or South point first.  
 E.g. North West – South West  
 To find a 4 figure grid reference you must; Go along the corridor and find the grid Square; Choose the bottom left number on that square; You then go up the stairs, find the grid square and choose the bottom left number on that square.  
 To find a 6 figure grid reference you must; Go along the corridor and find the grid square; Choose the bottom left number on that square; Imagine the square is divided into tenths and decide how many 10th's across the object it. This will be 3rd number; You then go up the stairs, find the grid square and choose the bottom left number on that square; Imagine the square is divided into tenths and decide how many 10th's across the object it. This will be 6th number.
- Continents, oceans and lines of latitude.
- Compass directions, scale and distance: ruler/piece of paper to from one point to the other and then measure this on the scale line.
- The physical and human features of the UK (Linked to Spring 1 topic)
- The importance of photos and sketch maps
- UK population and settlement distribution (Linked to Spring 1 topic)
- Describing patterns on maps

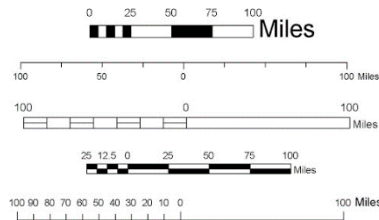
**Vocabulary**

as the crow flies	a distance measured in a straight line, which does not necessarily stick to paths and roads
compass	an instrument used for navigation and orientation
grid square	a way of using squares to help locate places on a map
human feature	things that are built by humans such as bridges and roads
lines of latitude	Imaginary lines around the world that goes from East to West
lines of longitude	Imaginary lines around the world that goes from North to South
physical feature	natural objects such as mountains and rivers
ratio	the comparison of two values of the same kind
scale	the ratio of a distance on a map to the real distance on the ground

**Diagrams**

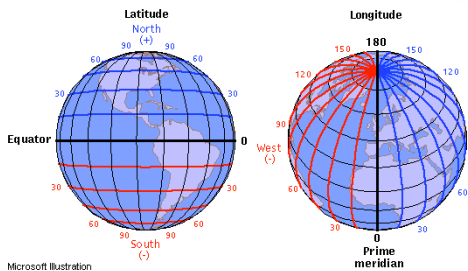
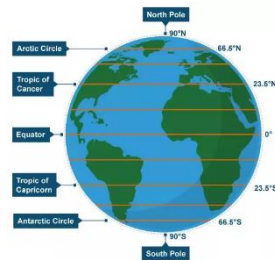


8 point compass – promain.co.uk



Scale line – jsu.edu

Lines of latitude/ longitude – quora.com



Microsoft Illustration



Question 1: What are the 7 main lines of latitude?	Start of unit:	End of unit:
North Pole -		
Arctic Circle -		
- 23.5°N		
Equator -		
Tropic of Capricorn -		
- 66.5°S		
South Pole -		

Question 3: What is this 6-figure grid reference?	Start of unit:	End of unit:

Question 2: What is this 4-figure grid reference?	Start of unit:	End of unit:
<p>Lets try another example...</p>		

Question 4: What are the 8 points on a compass?	Start of unit:	End of unit:

Question 5: What is the distance between Stoke Mandeville station and The Bell pub as the crow flies?

Start of unit:

End of unit:

