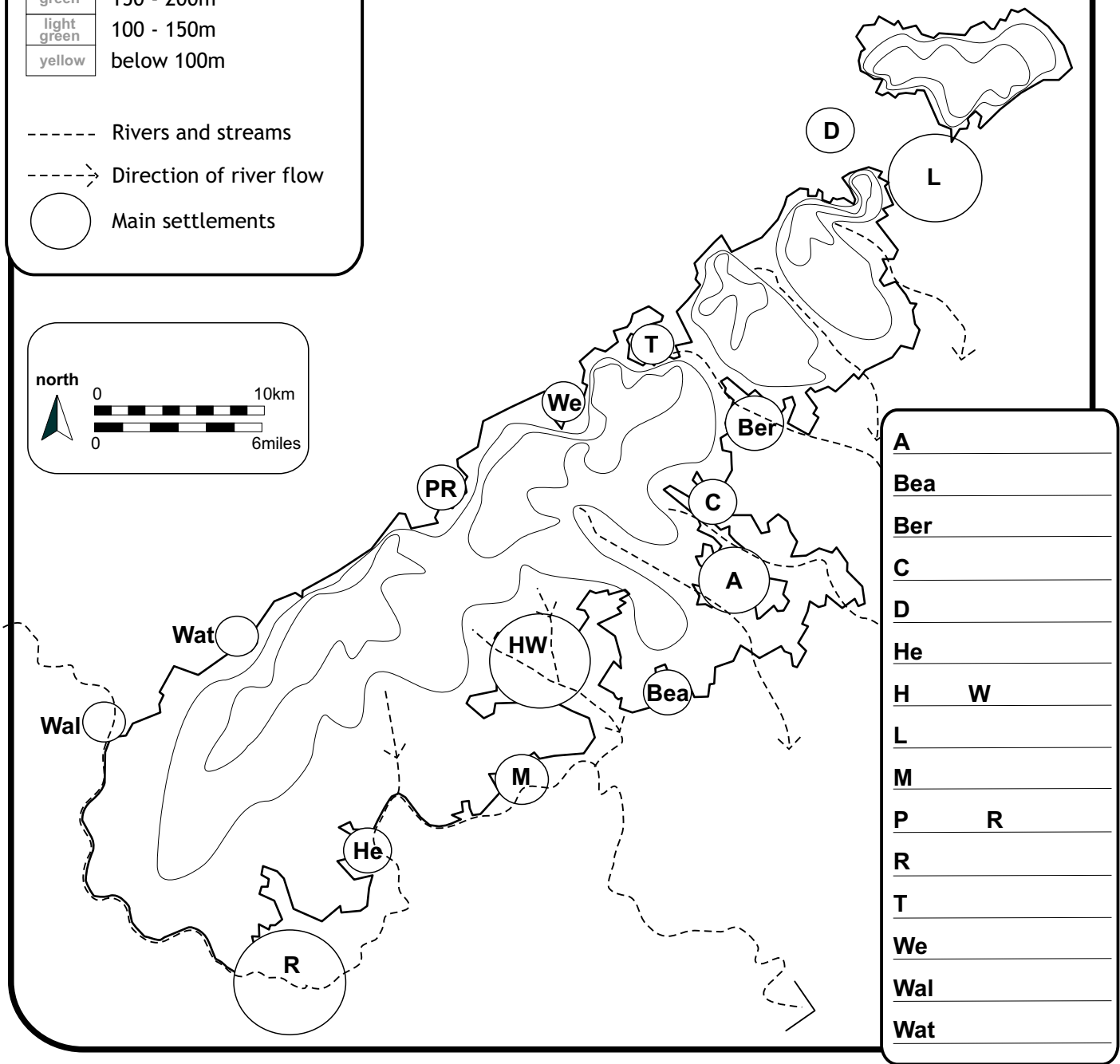
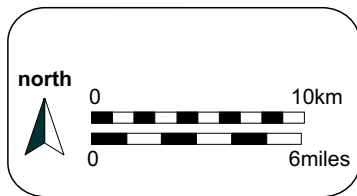


What are the main geographical features of the Chilterns?

This map shows the extent of the Chilterns, the relief (how high the land is), the main rivers and streams, and the main settlements that are located on the edges of the Chilterns

brown	above 200m
green	150 - 200m
light green	100 - 150m
yellow	below 100m

- Rivers and streams
- > Direction of river flow
- Main settlements



Tick the boxes below when you have completed each task:

- Lightly shade in the relief (height of land) using the colours shown
- Go over the rivers in blue, including an arrow to show direction of flow
- Shade the main settlements (circles) in red
- Use an atlas to complete the key showing settlement names